

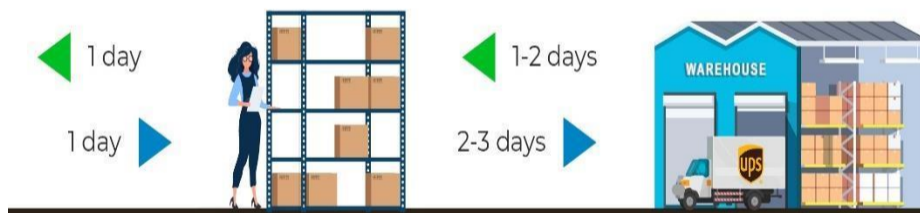
**COLD CHAIN CONSULTANCY & NEW TECHNOLOGY FOR THE SHIPMENT OF PHARMACEUTICAL PRODUCTS AND VACCINES**



# THE BEST SOLUTIONS FOR YOUR PHARMACY PHYSICAL and ONLINE STORE

## TRADITIONAL STORE & WAREHOUSE

**WASTE OF TIME TO FIND CATALOGUE GOODS IN THE WAREHOUSE AND IN THE STORE**



## PHARMACY SMART STORE 4.0

**OPTIMIZATION OF TIMES and COSTS OF THE WORK FORCE. COLD CHAIN PHARMACEUTICAL!**



Backroom notified



Restocked in minutes

Back Room



Goods Automatically Received



Local Distribution





# ITALO AMERICAN PHARMACY

Manage medicines by classifying them in the warehouse

with precision and speed, making the process of both inventory and replenishment preparation of the public side of the retail store or e-commerce more efficient and flexible.

It is possible to locate the item of pharmaceutical products in the exact location of the warehouse in such a way as to increase the service offered to its customers, speeding up the classification of inventories and reordering of products online or in the physical store.

From a security point of view, it increases control and therefore reduces losses resulting from theft.

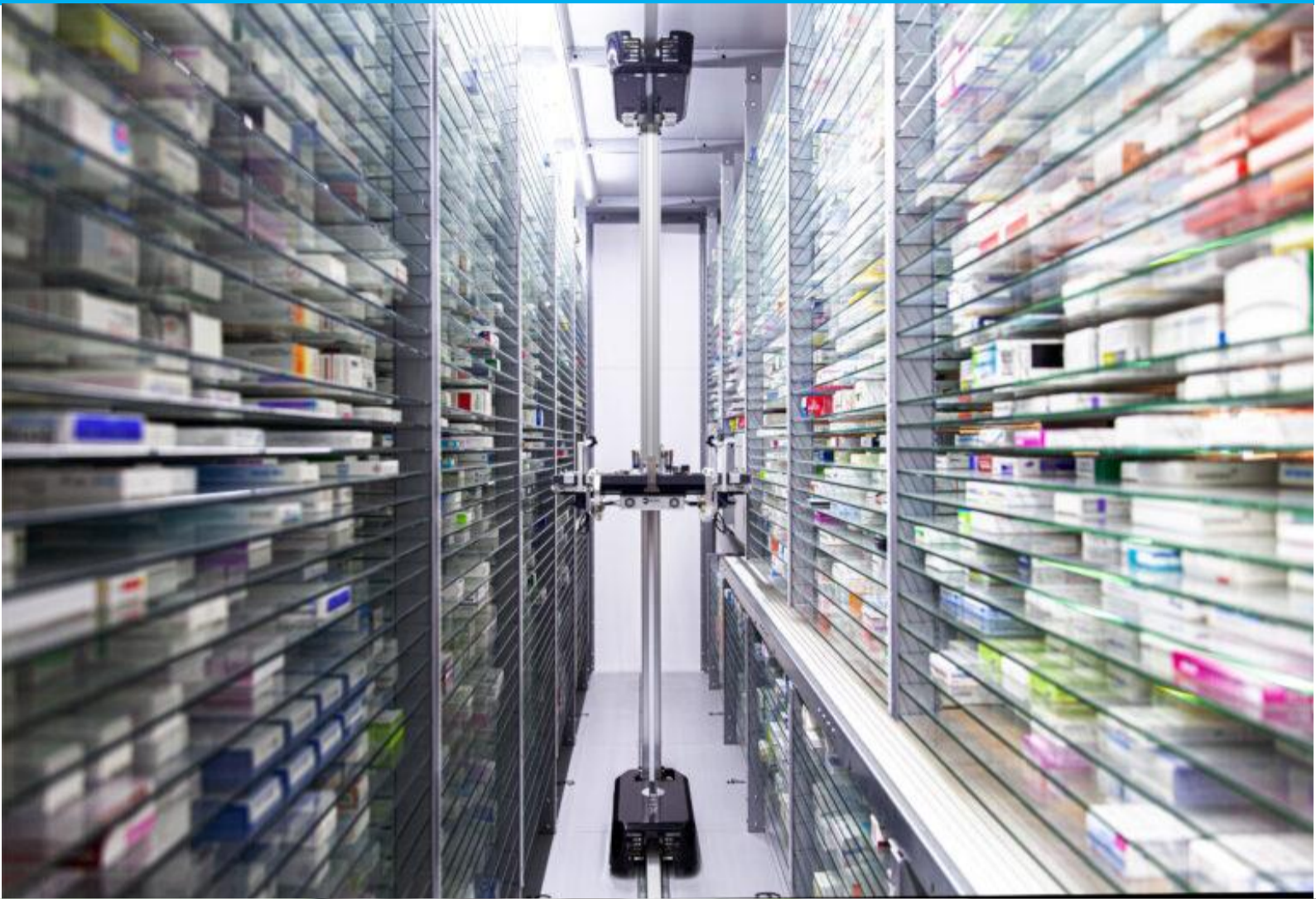
- ✓ DECREASE IN WORKFORCE COSTS
- ✓ INCREASE IN THE NUMBER OF SALES THROUGH THE INTERACTION OF PHYSICAL STORE, E-COMMERCE AND WAREHOUSE.
- ✓ REDUCTION OF PREPARATION ERRORS RELATING TO ORDERS AND SHIPPING
- ✓ OPTIMIZATION OF TIMES IN CATALOGING

WE PROVIDE CONSULTANCY FOR CONSTRUCTION PHARMACEUTICAL WAREHOUSE AND ITALO AMERICAN PHARMACY. PHARMA1HUMANITAS PROVIDE CONSULTANCY ALSO FOR MERGER & ACQUISITION PHARMACIES.



# SMART PHARMACY

## ROBOTIC SOLUTION INVENTORY





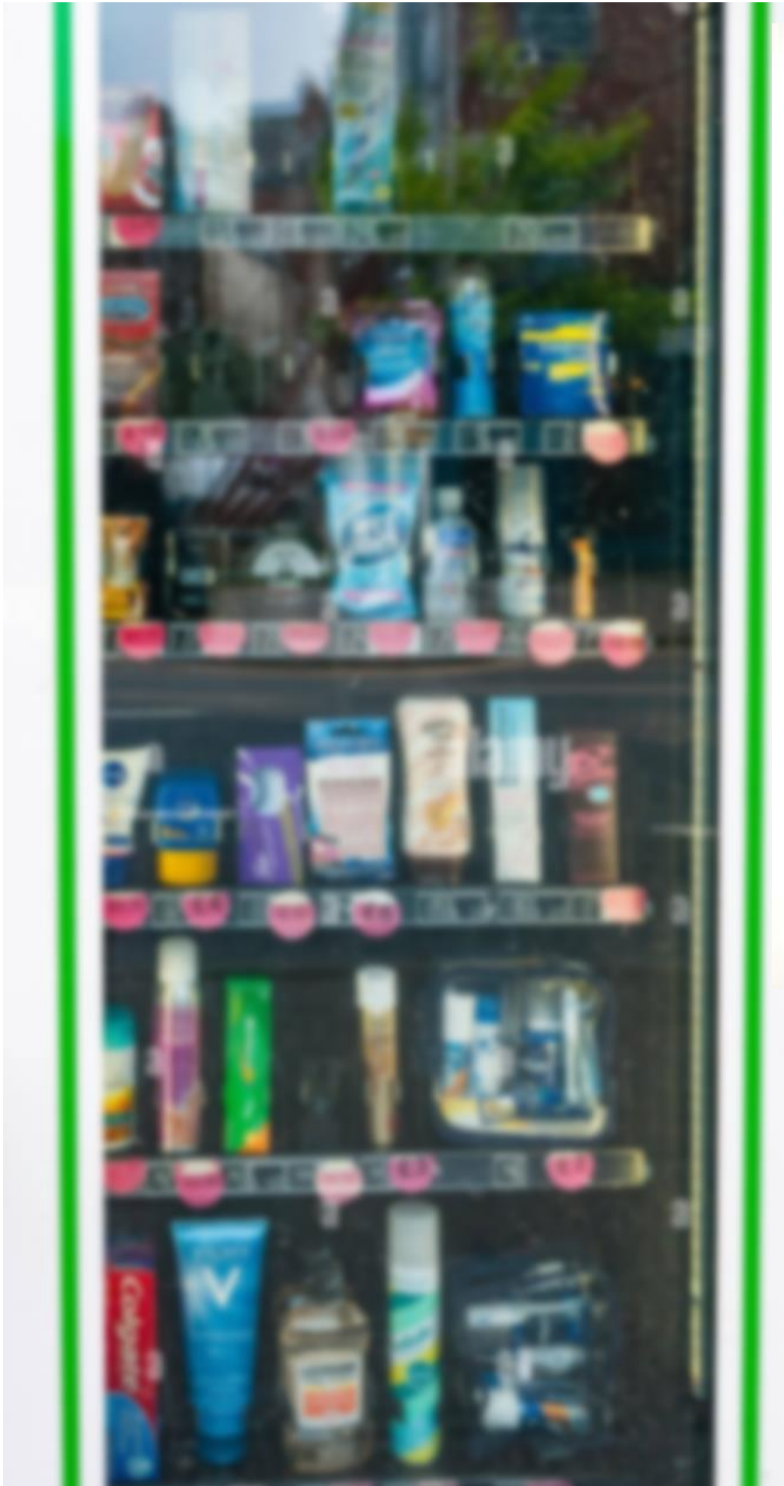


[www.pharma1humanitas.com](http://www.pharma1humanitas.com) pharma1humanitas@gmail.com





# Our innovative distributor





# Led pharmacy solution





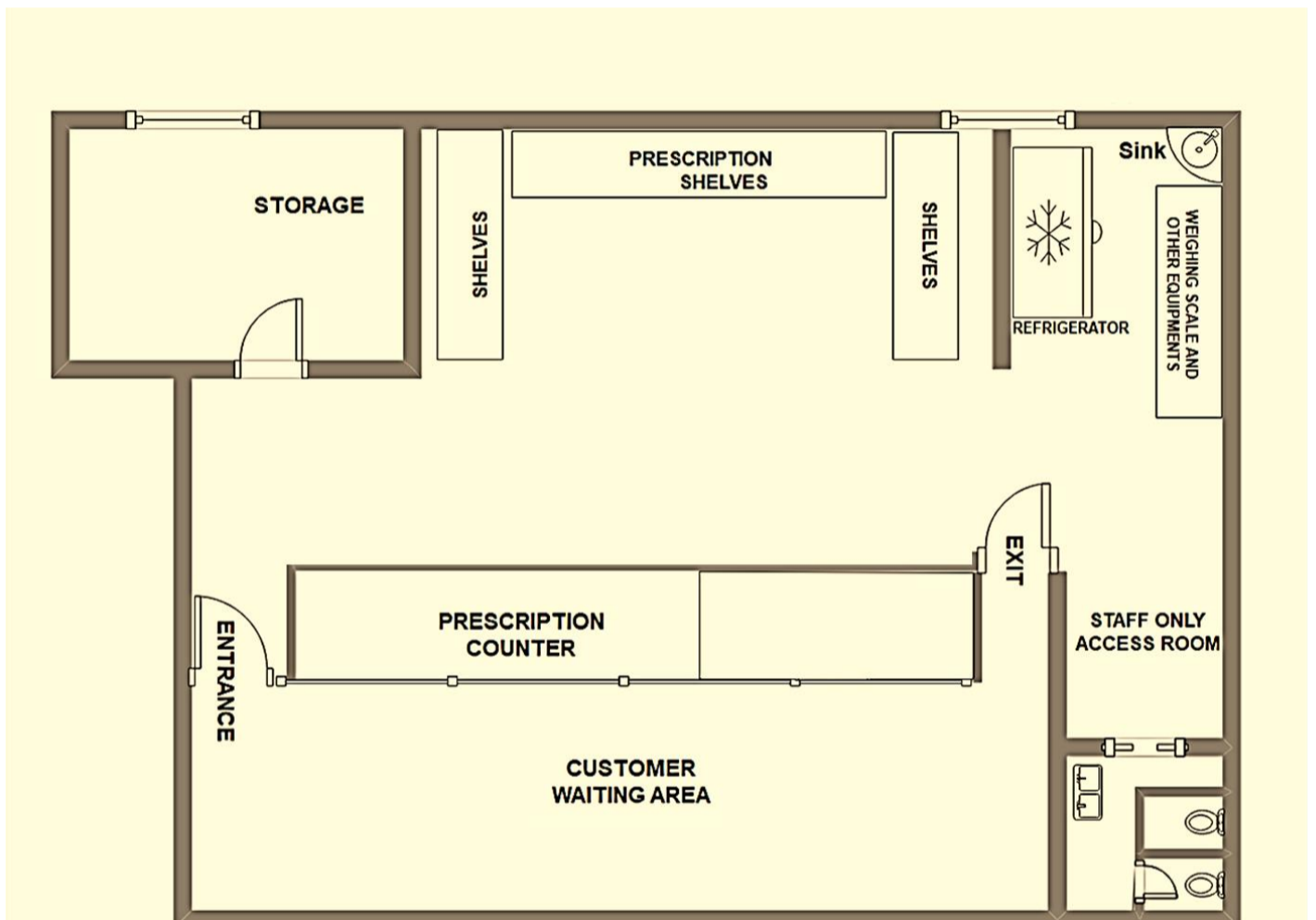


# Refrigerators & freezers





**PHARMA1HUMANITAS HOLDINGS LTD PROVIDE  
CONSULTANCY FOR CONSTRUCTION, DESIGN, MARKETING  
OR MERGERS AND ACQUISITIONS (M&A)  
OF PHARMACIES STORES.**







**ITALO AMERICAN  
PHARMACY**



[www.pharma1humanitas.com](http://www.pharma1humanitas.com) pharma1humanitas@gmail.com





[www.pharma1humanitas.com](http://www.pharma1humanitas.com) pharma1humanitas@gmail.com





## LEVEL 1

### PHARMACY DEPARTMENT

. RECEPTION AND STORAGE OF DRUGS BY A ROBOTIC SYSTEM.

. DISTRIBUTION OF DRUGS WITH BARECODE AND TRACEABILITY FINGER PRINT,

### LAVORATORY DEPARTMENT

USE OF ROBOTS OF VERY HIGH LEVEL TECHNOLOGIQUE WITH TRACEABILITY,





# SMART PHARMACY 4.0

## SMART INVENTORY-ROBOTIC SOLUTION

- OPTIMIZATION OF WORKING TIMES
- OPTIMIZATION OF WORKFORCE COSTS
  - EASILY FIND AND RETRACE ROUTES
- CLASSIFY AND CATALOG PRODUCTS WITH PRECISION
- LOCATE THE EXACT POSITION OF THE PRODUCT
  - RECEIVE TAILORED ADVICE AND REPORTS
  - RECREATE ANALYSIS AND CUSTOMIZATION MODELS OF TYPICAL WEB PATHS IN PHYSICAL ENVIRONMENTS

Unique, remote and wireless identification of products thanks to radio frequency devices.

These electronic devices capable of generating specific frequencies that are propagated in the air through special antennas.

MODERNIZE THE MANAGEMENT OF YOUR:  
WAREHOUSE PHYSICAL STORE  
ONLINE SHOP





# SOFTWARE FOR E-COMMERCE & INVENTORY THE DEPARTMENT STORE OF PHARMACY



Physical  
Strategic Shipping Customer  
Accuracy Stocking  
Systems  
Operations Entry Microsoft Service  
Planning Receiving Chain  
5S Sales Merchandising  
Data  
Logistics  
Retail Supply Warehouse Purchasing  
Access Forklift Control  
Operation

# Inventory Management



**WE ARE WORKING TO IMPROVE OUR APP TO CONNECT PHARMACIES, HOSPITALS, DOCTORS, BUYERS, PATIENTS AND PARTNER SUPPLIERS TO SHIP MEDICINES SPEED WITH A SUPER INNOVATIVE APP.**



*Warehouse*



*Finish Products*



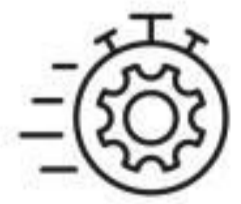
*Shipping*



*Production*



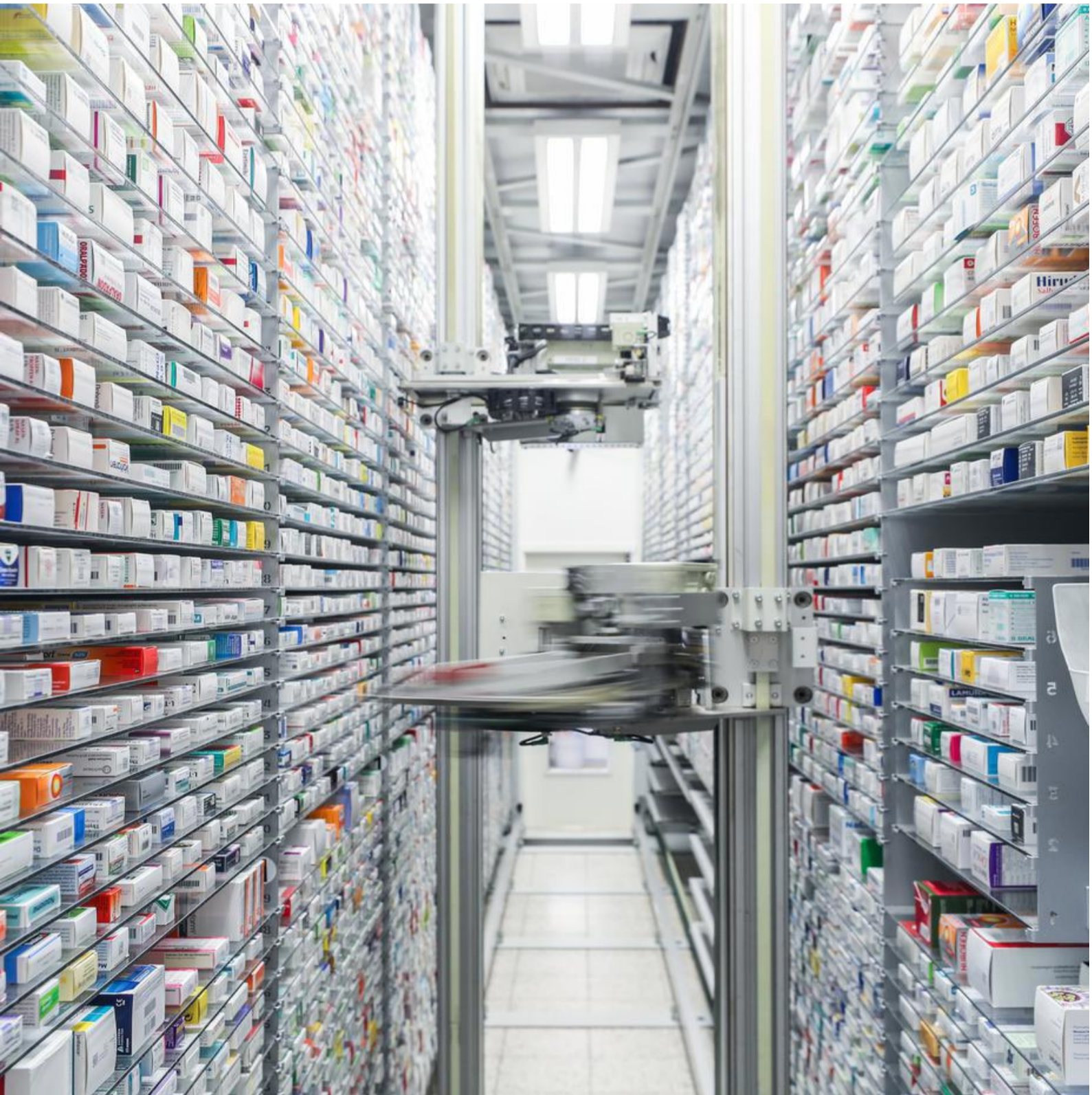
*Quality Check*







# TRACEABILITY OF THE MEDICINES



## *Inventory Management Workflow*







THE SUPPLY OF PHARMACEUTICAL ITEMS HELD IN RESERVE TO SATISFY FUTURE DEMAND IS REFERRED TO AS INVENTORY IN PHARMACY OPERATIONS. THE MOST VALUABLE ASSET IN A PHARMACY IS ITS INVENTORY, WHICH IS INCREASING IN VALUE DUE TO THE INCREASING VARIETY AND EXPENSE OF PHARMACEUTICALS. PHARMACY PRACTICE BENEFITS GREATLY FROM EFFECTIVE INVENTORY MANAGEMENT, BOTH FINANCIALLY AND OPERATIONALLY. INVENTORY MANAGEMENT SEEKS TO LOWER CARRYING AND PROCUREMENT COSTS WHILE PRESERVING A SUFFICIENT SUPPLY OF GOODS TO MEET DEMAND FROM PRESCRIBERS AND CUSTOMERS. THE PHARMA 1 HUMANITAS AND OUR PANELS OF EXPERT IS ABLE TO CARRY OUT INNOVATIVE INVENTORY MANAGEMENT TECHNIQUES USED IN PHARMACY PRACTICE. MODERN DIGITAL TECHNOLOGIES ARE CONTRIBUTING TO THE INCREASED SECURITY, ECONOMY, AND EFFICIENCY OF INVENTORY MANAGEMENT. A PHARMACY INVENTORY MANAGEMENT SYSTEM IS A DIGITAL TECHNOLOGY CLASSIFICATION TECHNIQUE THAT MANY PHARMACIES USE THESE DAYS TO ASSIST ITS OWNERS MANAGE THEIR INVENTORY AND BUSINESS EXPENSES. THIS MAKES IT A VERY SCALABLE AND FLEXIBLE SOLUTION WITH OUTSTANDING FEATURES, DATA ANALYSIS CAPABILITIES, AND MORE. THANKS SPECIFIC SCANNING EQUIPMENT THAT USE BARCODE LABELS ON PRODUCTS AND SHELVES TO BOLSTER PERIODIC INVENTORY MANAGEMENT PROCESSES. OUR METHODOLOGY ASSISTS IN MAKING BOTH LARGER-SCALE E-PROCUREMENT AND SMART SUPPLY CHAIN.







**QR-CODE MACHINE READING**







# **FORKLIFT FOR WAREHOUSE**



## *Inventory Management Workflow*







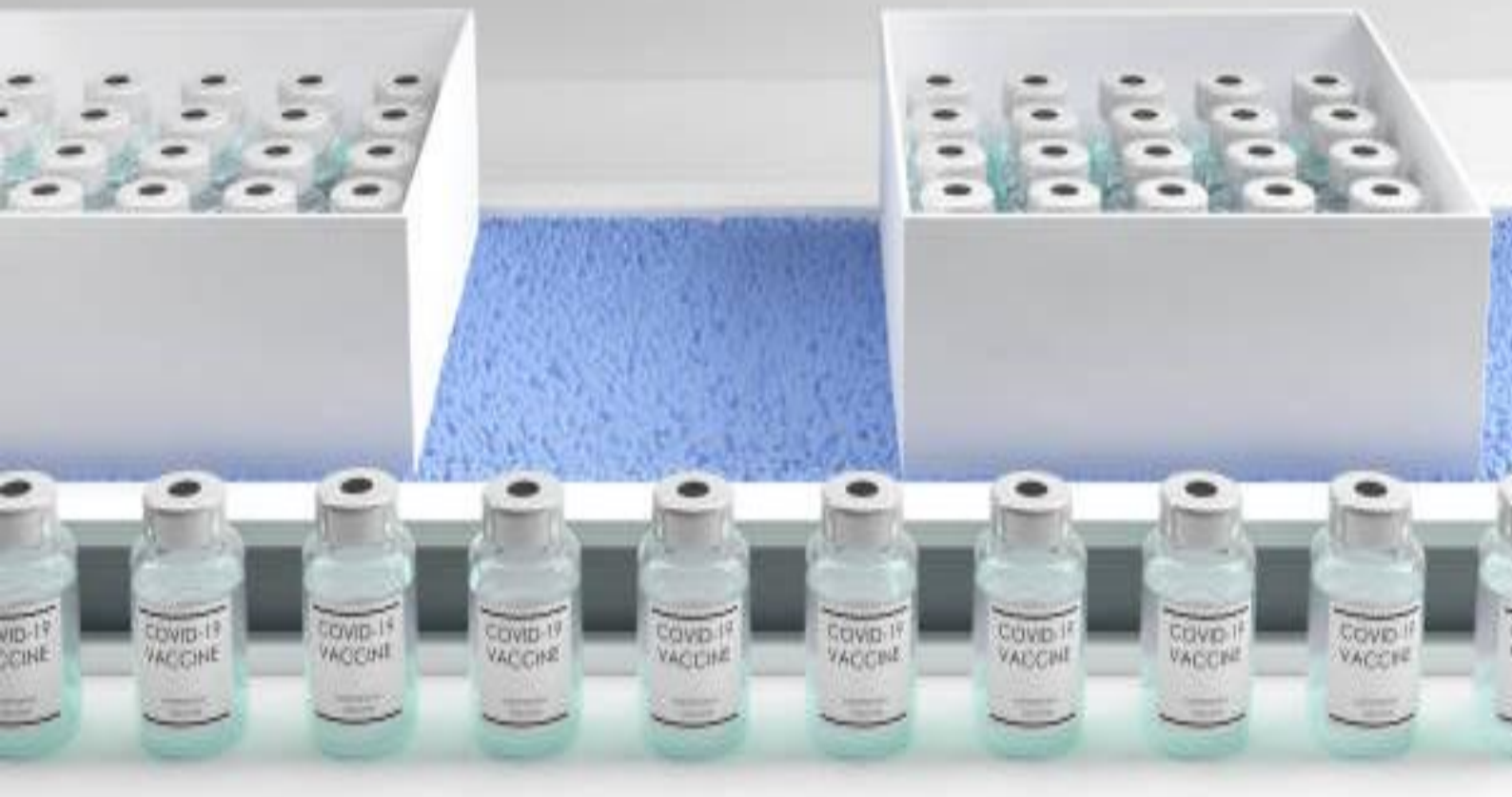
# PHARMA 1 HUMANITAS COLD CHAIN SOLUTION







# PHARMA 1 HUMANITAS COLD CHAIN SOLUTION







**PELI**  
**BIO THERMAL™**

PHARMA 1 HUMANITAS  
COLD CHAIN SOLUTION FOR  
CUSTOMERS SHIPPING.



## SETTING NEW STANDARDS IN SINGLE-USE SHIPPERS

CoolGuard™ Advance is our range of high-performance single-use shipping systems with phase change materials and vacuum insulated panels. This shipper is designed and tested to ensure maximum protection of valuable payload through use of standardised components with simple, error-free assembly.

## WHY CHOOSE COOLGUARD™ ADVANCE?

- Superior temperature stability of 72 - 120+ hours
- High-performance VIP and PCM technology reduces excursions and increases compliance while providing a low total cost of ownership
- Achieves industry leading payload to external volume ratios, reducing storage and distribution costs
- Hibernation can be achieved at any point during transit, resulting in longer temperature compliant shipments
- Quick, simple, and error-free packing process with single-temperature, one size PCM coolants interchangeable between CoolGuard™ Advance and CoolGuard™ PCM ranges



**DURATION**  
72 - 120+ hours



### TEMPERATURE

**SERIES 4**  
2°C to 8°C  
**SERIES 22**  
15°C to 25°C  
**SERIES 20M**  
-20°C



**PAYLOAD SIZE**  
4L, 12L, 28L,  
56L, 96L



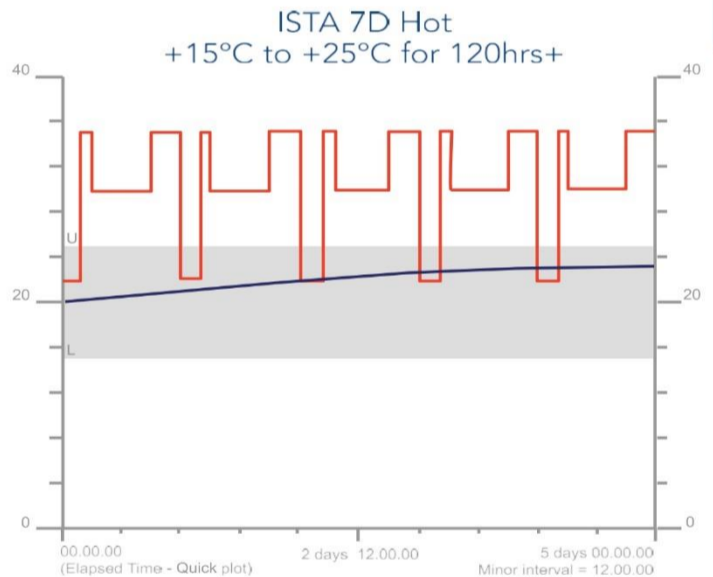
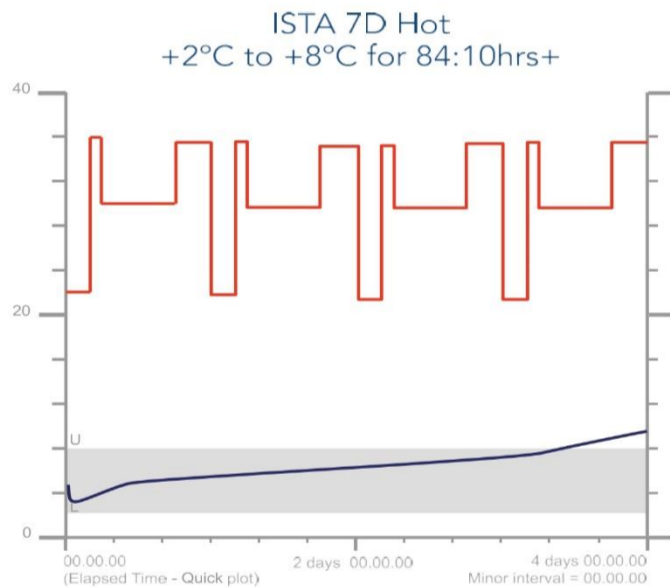




**COOLGUARD™ ADVANCE PRODUCT SPECIFICATION**

	Payload Size	Exterior Dimensions WxDxH		Interior Dimensions WxDxH		Tare Weight	
		mm	inches	mm	inches	kg	lbs
Series 4 2C - 8C Series 22 15C - 25C	4L	310 x 310 x 312	12.20 x 12.20 x 12.30	152 x 152 x 152	5.98 x 5.98 x 5.98	4	9
	12L	395 x 395 x 395	15.55 x 15.55 x 15.55	230 x 230 x 230	9.06 x 9.06 x 9.06	9	20
	28L	460 x 460 x 470	18.11 x 18.11 x 18.50	297 x 297 x 305	11.69 x 11.69 x 12.01	14	31
	56L	552 x 552 x 558	21.73 x 21.73 x 21.97	381 x 381 x 381	15.00 x 15.00 x 15.00	22	47
	96L	630 x 630 x 636	24.80 x 24.80 x 25.04	457 x 457 x 457	17.99 x 17.99 x 17.99	30	67
Series 20M -20C	4L	310 x 310 x 312	12.20 x 12.20 x 12.30	152 x 152 x 152	5.98 x 5.98 x 5.98	6	13
	12L	395 x 395 x 395	15.55 x 15.55 x 15.55	230 x 230 x 230	9.06 x 9.06 x 9.06	13	28
	28L	460 x 460 x 470	18.11 x 18.11 x 18.50	297 x 297 x 305	11.69 x 11.69 x 12.01	18	41
	56L	552 x 552 x 558	21.73 x 21.73 x 21.97	381 x 381 x 381	15.00 x 15.00 x 15.00	27	60
	96L	630 x 630 x 636	24.80 x 24.80 x 25.04	457 x 457 x 457	17.99 x 17.99 x 17.99	38	84

**ADDITIONAL DATA**



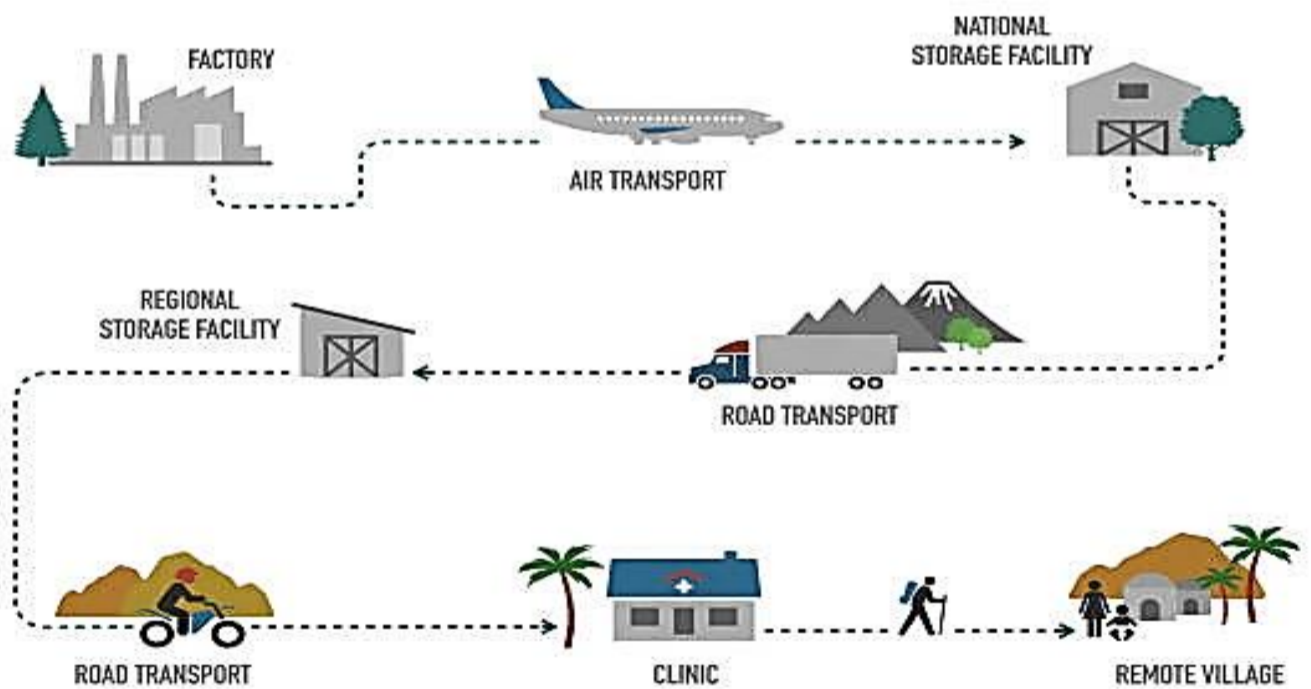
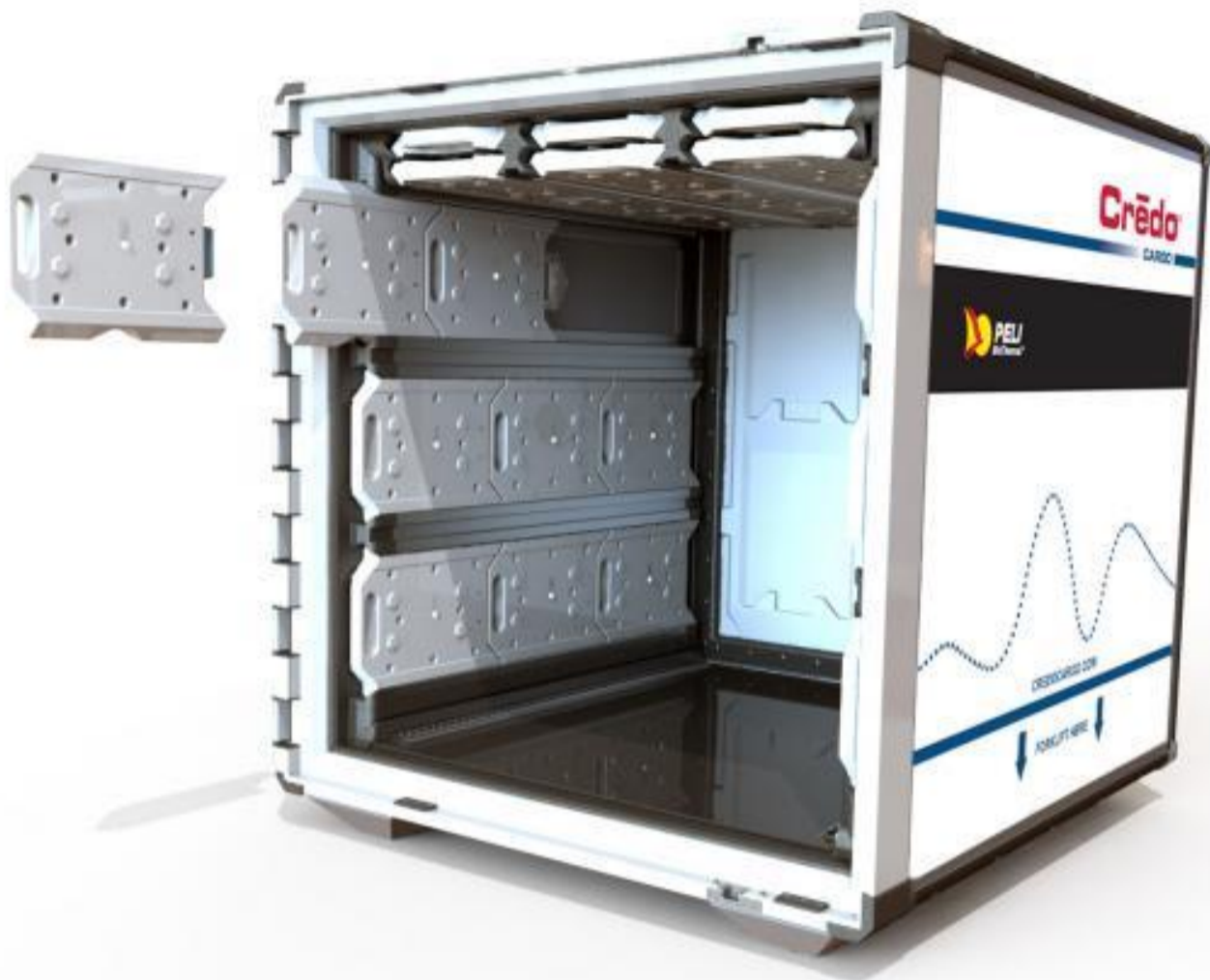
**ISO17025, ISO9001-2008 Accredited**







# COLD CHAIN SOLUTION





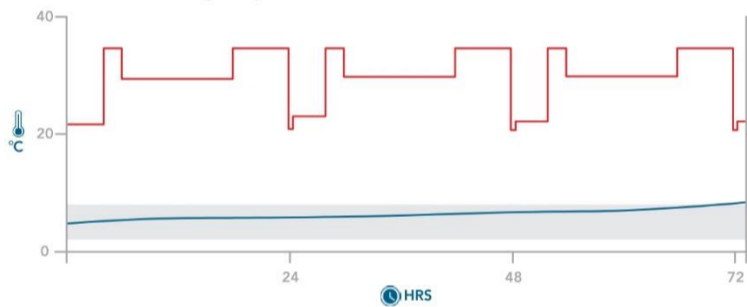


## COOLPALL FLEX™ ADVANCE PRODUCT SPECIFICATION

Product	Litres	Exterior Dimensions WxDxH		Interior Dimensions WxDxH		Tare Weight		
		mm	inches	mm	inches	kg	lbs	
<b>EURO PALLET</b>	Single Pod NBA	175	1210 x 802 x 717	47.6 x 31.5 x 28.2	928 x 530 x 356	36.5 x 20.8 x 14.1	60.7	133.5
	Double Pod NBA	150	1210 x 802 x 717	47.6 x 31.5 x 28.2	928 x 455 x 356	36.5 x 17.9 x 14.1	77.1	169.6
	Single Pod HH	359	1210 x 802 x 1110	47.6 x 31.5 x 43.7	928 x 530 x 729	36.5 x 20.8 x 28.7	93.3	205.2
	Double Pod HH	308	1210 x 802 x 1110	47.6 x 31.4 x 43.7	928 x 455 x 729	36.5 x 17.9 x 28.7	113.7	250.1
	Single Pod FH	549	1210 x 802 x 1501	47.6 x 31.5 x 59	928 x 530 x 1117	36.5 x 20.8 x 43.9	120.6	265.3
	Double Pod FH	472	1210 x 802 x 1501	47.6 x 31.5 x 59	928 x 455 x 1117	36.5 x 17.9 x 43.9	150.7	331.5
<b>ISO PALLET</b>	Single Pod NBA	241	1210 x 1002 x 717	47.6 x 39.4 x 28.2	928 x 730 x 356	36.5 x 20.8 x 14.1	76.2	167.6
	Double Pod NBA	216	1210 x 1002 x 717	47.6 x 39.4 x 28.2	928 x 655 x 356	36.5 x 17.9 x 14.1	99.6	219.1
	Single Pod HH	494	1210 x 1002 x 1110	47.6 x 39.4 x 43.7	928 x 730 x 729	36.5 x 20.8 x 28.7	96.6	212.5
	Double Pod HH	443	1210 x 1002 x 1110	47.6 x 39.4 x 43.7	928 x 655 x 729	36.5 x 17.9 x 28.7	130.1	286.2
	Single Pod FH	757	1210 x 1002 x 1501	47.6 x 39.4 x 59	928 x 730 x 1117	36.5 x 20.8 x 43.9	136.5	300.3
	Double Pod FH	679	1210 x 1002 x 1501	47.6 x 39.4 x 59	928 x 655 x 1117	36.5 x 17.9 x 43.9	166.6	366.5

### ADDITIONAL DATA

Series 4 CoolPall™ Flex Advance Half Height Single Pod  
Single Layer ISO +2°C to +8°C ISTA7D HOT 68 hours



Narrow Bodied Aircraft



Half Height



Full Height

**ISO17025, ISO9001-2008 Accredited**





**PELI**  
**BIO THERMAL™**



  
**COOLPALL™**  
**FLEX ADVANCE**

### PHARMA 1 HUMANITAS COLD CHAIN SHIPPING SOLUTION

#### SETTING NEW STANDARDS IN SINGLE-USE BULK SHIPPERS

CoolPall™ Flex is our range of high-performance bulk shippers, available in ISO and EURO footprints. CoolPall™ Flex is highly customisable, allowing users to tailor their shipper to specific shipping lanes or performance requirements, to achieve the optimal thermal protection at lowest overall cost. CoolPall™ Flex Advance comprises polystyrene and full VIP insulation surrounding the payload space (base, side panels and lid) together with PCM coolants in single or double configurations for premium performance, in 3 different sizes (narrow bodied aircraft, half height, full height).

#### WHY CHOOSE COOLPALL™ FLEX ADVANCE?

- A new approach in the design of bulk shippers
- Performance in excess of 140 hours
- Features PCM coolants and VIP insulation for the high performance available
- Double pod versions available for increased duration
- Narrow Bodied Aircraft, Half Height and Full Height options
- Payload volumes from 150L to 757L
- ISO & EURO footprints available
- Optimised for ULD use for air cargo applications
- Qualified to ISTA7D Profiles



#### COOLPALL™ FLEX ADVANCE



**DURATION**  
140 + HOURS



**TEMPERATURE**  
**SERIES 4**  
+2°C to +8°C

**SERIES 18-24**  
+15°C to +25°C

**SERIES 20M**  
-20°C



**VOLUME**  
150L - 757L

pharma1humanitas



[www.pharma1humanitas.com](http://www.pharma1humanitas.com) pharma1humanitas@gmail.com





**PELI**  
**BIO THERMAL™**

# NanoCool™ DEEPFREEZE™ DRY ICE SHIPPER



## DISEAS DIAGNOSTIC DNA TEST COLD CHAIN

### WHAT ARE DEEPFREEZE™ SHIPPERS?

DeepFreeze™ Shippers are frozen product shipping systems requiring dry ice. These shippers feature advanced insulation technology to ship -65°C temperature controlled payloads, including cell and gene therapy products for over 96 hours while using less dry ice than traditional packages.

A key design feature of DeepFreeze is a novel spacer to hold a product box in the middle of the shipper. When dry ice is added to the shipper, this keeps the product at the desired temperature until almost all the ice has sublimated.

### WHY CHOOSE OUR DEEPFREEZE™ SHIPPERS?

- Advanced insulation properties eliminate re-icing during extended duration shipments.
- Lightweight shippers alleviate safety concerns associated with N2 transport systems and other dry ice shippers.
- Insulation material is manufactured with tough barrier film and nanoporous core to protect your product.
- Environmentally friendly: small footprint produces less waste and less CO<sub>2</sub> output.
- Inner product box accommodates standard 2" tall cryogenic boxes.
- Lower weight and smaller size eases handling

### DEEPFREEZE™ SHIPPER



**DURATION**  
Over 96 hours



**TEMPERATURE**  
Below -65°C



**VOLUME**  
Up to 2.36L

"PROTECTS -65°C PRODUCTS FOR OVER 96 HOURS WHILE USING LESS DRY ICE THAN TRADITIONAL SYSTEMS."

**NanoCool™**

PELIBIOTHERMAL.COM



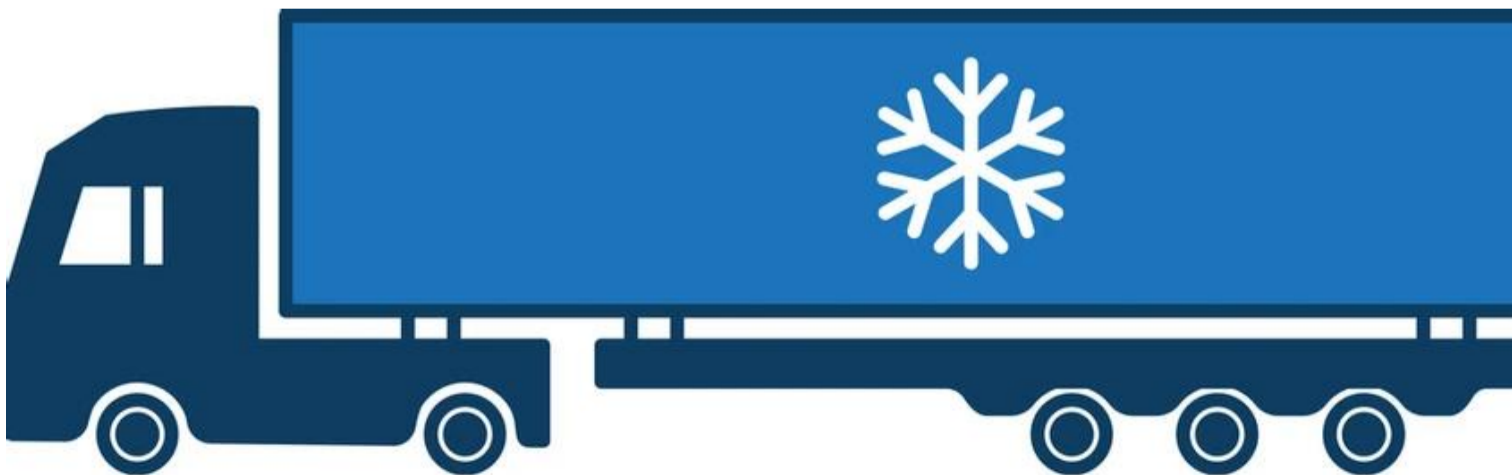
[www.pharma1humanitas.com](http://www.pharma1humanitas.com) pharma1humanitas@gmail.com



## DEEPFREEZE™ PRODUCT SPECIFICATION

	Duration Hours	Exterior Dimensions WxDxH		Payload Dimensions WxDxH		Internal Volume Litres	Empty Weight	
		mm	inches	mm	inches		kg	lbs
2-98831	96	337 x 292 x 297	12.3 x 11.5 x 11.7	100 x 100 x 100	4.0 x 4.0 x 4.0	1.1	2.7	6
2-98832	96	300 x 300 x 300	12.3 x 11.5 x 11.7	149 x 149 x 100	5.9 x 5.9 x 4.0	2.36	2.76	6.1

## DISEAS DIAGNOSTIC DNA TEST COLD CHAIN







# **COLDCHAIN CONTAINER FOR SHIPMENT**











# CLASSIFICATION OF THE MEDICINES











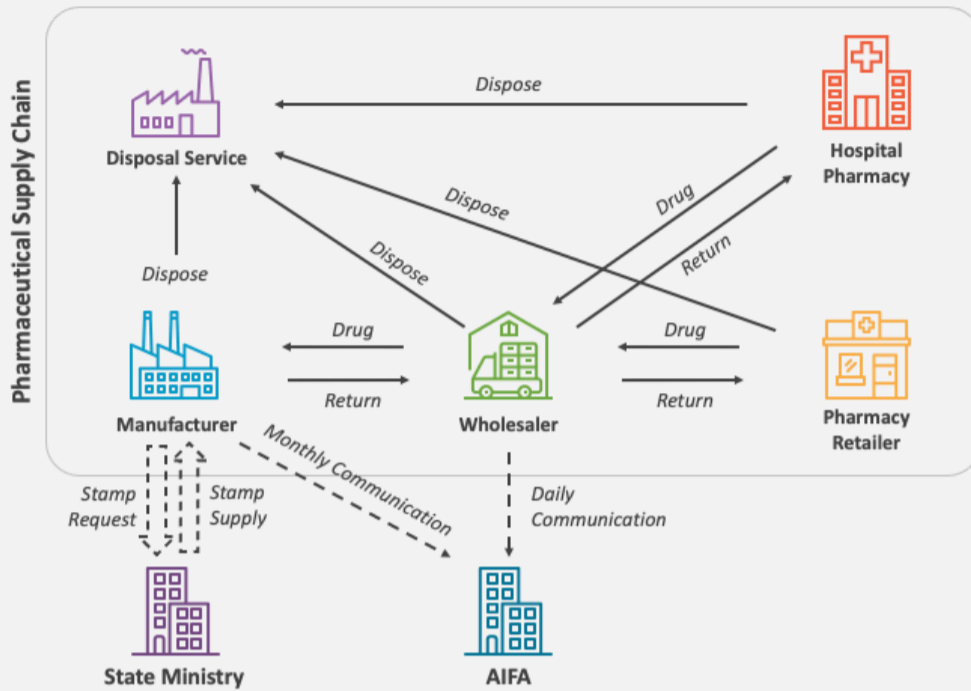
## PHARMACY MANAGEMENT SYSTEM







# PHARMA SUPPLY CHAIN



# PHARMACY MANAGEMENT SYSTEM

Pharmacy Management Software





# CLASSIFICATION OF THE MEDICINES



[www.pharma1humanitas.com](http://www.pharma1humanitas.com) pharma1humanitas@gmail.com





[www.pharma1humanitas.com](http://www.pharma1humanitas.com) pharma1humanitas@gmail.com



This feasibility study material is for the personal use of the owner of the company Pharma1humanitas holdings Ltd and is covered by copyright. Reproduction or reuse, even partial, is strictly prohibited, pursuant to and for the purposes of the copyright law (L. 22.04.1941/n. 633). This project is owned by the Italian group represented by the owner of company CEO of pharma1humanitas holdings Ltd.

Email: [pharma1humanitas@gmail.com](mailto:pharma1humanitas@gmail.com)

Website: [www.pharma1humanitas.com](http://www.pharma1humanitas.com)